



Institute of Continuing
Legal Education



NOVEMBER 19-20, 2026 | VIBE CREDIT UNION SHOWPLACE, NOVI

25TH ANNUAL

Family Law Institute

The Place to Connect in Michigan Family Law

COSPONSOR

Family Law Section of the State Bar of Michigan

REGISTER TODAY

www.icle.org/family

877-229-4350

ICLE | Your Partner in Practice | The Education Provider of the State Bar of Michigan,
University of Michigan Law School, Wayne State University Law School, University of Detroit
Mercy School of Law, Cooley Law School, Michigan State University College of Law

The **Place to Connect** in Michigan Family Law

Join 600+ members of Michigan’s family law community, including dozens of judges, all under one roof! You won’t find networking like it anywhere else—the priceless connections alone are well worth two days out of the office.

It’s also a rare opportunity to hear straight from the bench. Judges from across the state share invaluable insights on everything from successfully introducing evidence to improving your chances on appeal.

The all-star judicial faculty answers questions such as:

- How can practitioners improve the justice system by understanding signs of trauma?
- What is a clear, repeatable evidence workflow that will help you get documents admitted?
- How can you push back and protect clients when facing the growing issue of litigation abuse?
- How do judges really rule on contentious separate property issues?
- What is the difference between a “normal life change” and a “material change that will affect the life of a child”?



Hon. Janice K. Cunningham,
56th Circuit Court

You Asked, We Answered

**“Worth the price
of admission.”**

It’s no secret that Judge Cunningham’s caselaw update gets rave reviews every year. Don’t miss this chance to hear from one of our most popular speakers and one of the most respected members of Michigan’s judiciary. Back in its expanded time slot due to popular demand.

Gain Insights from **11 Judges** Across the State



Hon. Carol Montavon Bealor
43rd Circuit Court



Hon. Susan A. Dabaja
3rd Circuit Court



Hon. Kathleen A. Feeney
Michigan Court of Appeals



Hon. Jennifer L. Johnsen
17th Circuit Court



Hon. Paul F. Kraus
20th Circuit Court



Hon. David M. Lawson
U.S. District Court for the Eastern
District of Michigan



Hon. Jenny L. McNeill
14th Circuit Court



Hon. Amanda G. Pollard
Eaton County Probate Court



Hon. Lorie N. Savin
6th Circuit Court



Hon. Jon A. Van Allsburg
20th Circuit Court



Hon. Christopher P. Yates
Michigan Court of Appeals

Real-World Guidance for the Issues on Your Desk

Get practical answers for the challenges showing up in your practice right now. Veteran practitioners and other experts deliver insights on tricky topics, emerging trends, and everyday workflow issues—so you can work smarter, avoid costly missteps, and serve clients with confidence.

11:15am/Thursday

The Impact of Secondary Trauma on Family Law Professionals

Trauma can take its toll—even when it isn't your own. From high-conflict custody disputes to graphic evidence, family law professionals face an increasing risk of Secondary Traumatic Stress (STS) today. A clinical psychologist with deep juvenile justice and child welfare experience shares how to spot warning signs, protect your well-being, and still support clients effectively. *For more on trauma-related issues, see page 6.*



Featured Speaker
Carly Baetz
Purdue University Northwest,
Hammond, IN

3:50pm/Thursday

Developing Expertise: Top 10 Must-Know Subjects for Every Family Law Lawyer and Judge

It's daunting: family law lawyers need expertise on taxes, mental health, income, bankruptcy, valuations, pensions, and more. Learn how to develop the vast knowledge you need before making costly mistakes. Get perspectives from both a newer and longtime family law practitioner. Walk away with an easy-to-follow training plan and materials that will help you get started right away.



Featured Speaker
Jennie Boldish Bryan
McShane & Bowie PLC,
Grand Rapids

9:00am/Friday

The Rise of Deepfakes: AI-Generated Evidence

Fake evidence is getting harder to spot—and harder to ignore. From altered text messages to AI-generated video, family law practitioners are seeing a rise in evidence that may not be what it seems. Hear from a trusted Michigan practitioner and leading AI expert Dr. Hafiz Malik from the University of Michigan on how deepfakes are impacting courts, how to identify them, and how judges and states are responding.



Featured Speaker
Randall J. Chioini
Chioini Group PLLC, Mount Clemens

11:05am/Friday

How to Introduce Evidence in Hearings and Trial

Not at ease with evidence? You're not alone. This practical, demo-based session gives you a step-by-step process you can use the next time you need to admit texts, emails, photos, financial records, or other common family law exhibits. Learn how to lay a proper foundation, authenticate evidence, handle common objections, and more—with guidance from both a judge and experienced practitioner.



Featured Speaker
John K. Kline
Kline Legal Group PLC, Ann Arbor



New to Family Law?

Make Connections That Matter.
Get Guidance You'll Use.

Nothing beats in-person networking at the institute. Build valuable contacts one conversation at a time: a practitioner you can call with a procedural question, a colleague for referrals, a referee who can explain local expectations, or a judge whose perspective informs your strategy.

Get how-to guidance at sessions throughout—including the Family Law Foundations Track. Leave with practical tips you can use right away to manage your workload and practice with confidence.



Schedule Highlights for Newer Lawyers

1:30pm/Thursday

Knowing What You Don't Know: Strategic Use of Experts in Family Law

Learn when to bring in experts—and how to use them strategically without overcomplicating your case.

3:10pm/Thursday

The Referee Hearing: What You Need to Know

Sharpen your skills with basic referee protocols that lawyers often miss—and lesser-known tips to avoid costly missteps.

9:00am/Friday

Divorce and Finances: Understanding the Basics

Build confidence handling divorces, from business valuations to discovery strategies and using financial experts effectively.

Straight from the Bench: What Lawyers and Judges Need to Know Now



Where else can you get this much practical insight straight from the bench? In addition to Judge Cunningham’s perennially popular caselaw update, these sessions give both lawyers and judges a rare chance to learn how courts are handling today’s toughest family law issues.

For lawyers: gain a clearer sense of what judges are watching for, what arguments resonate, and what can derail a case.

For judges: take away practical tools for managing complex hearings, difficult behavior, and emerging courtroom challenges. Everyone leaves with strategies to manage tough issues more thoughtfully and support better outcomes for families.

Can’t-Miss Sessions

3:10pm/Thursday

Hands Off My Assets! Separate Property Invasion Showdown

“Separate property” is rarely as simple as it sounds. Test your instincts through real-world scenarios. Share how you think the judge should rule, then see how judges actually ruled! Plus, get recent caselaw updates and practical strategies for protecting separate assets or arguing for invasion.

3:50pm/Thursday

When the Courtroom Becomes a Weapon: Recognizing and Stopping Litigation Abuse in Family Law

When litigation becomes a weapon, lawyers need to act fast. Hear straight from the bench on spotting abusive filing patterns, emergency-motion tactics, and procedural gamesmanship—and get practical strategies to protect clients, focus the case, and push back effectively.

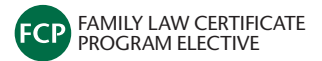
10:00am/Friday

Trauma-Informed Courtrooms: How Judges and Lawyers Can Positively Impact Behavior

When trauma is center stage, small changes in the courtroom can change the entire dynamic. Hear from a judge who uses trauma-informed tools in her own courtroom, including practical language shifts, listening techniques, and environmental changes that improve engagement, reduce escalation, and support fairer proceedings.

Agenda

CLE: 7.5 MCJE: 7.5 LEVEL: Basic/Intermediate/Advanced



THURSDAY, NOVEMBER 19, 2026

- 8:00am Registration, Continental Breakfast, and Vendor Showcase
- 9:00am Welcome, Introductions, and Section Update and Award Presentation
- 9:25am Domestic Relations Caselaw and Statutory Update with Analysis
- 11:00am Networking Break
- 11:15am The Impact of Secondary Trauma on Family Law Professionals
- 12:15pm Networking Lunch

| | Family Law Foundations Track | Intermediate/Advanced Track | Bench and Bar Track |
|--------|---|---|--|
| 1:30pm | Knowing What You Don't Know: Strategic Use of Experts in Family Law | New Pathways to Parentage | How to Assess Your Case for Trial |
| 2:25pm | I Want My Day in Court: Helping Clients Overcome Resistance to Settlement | Shades of Gray: Considerations in Gray Divorce at Every Stage | On the Record: Setting the Stage for Appeal |
| 3:05pm | Networking Break | | |
| 3:20pm | The Referee Hearing: What You Need to Know | Hands Off My Assets! Separate Property Invasion Showdown | Proving Proper Cause/Change of Circumstances |
| 4:10pm | Developing Expertise: Top 10 Must-Know Subjects for Every Family Law Lawyer and Judge | Intersection of Family Law and Juvenile Court | When the Courtroom Becomes a Weapon: Recognizing and Stopping Litigation Abuse in Family Law |

- 5:00pm Family Law Town Hall
- 5:30pm Networking Reception

FRIDAY, NOVEMBER 20, 2026

- 8:00am Registration, Continental Breakfast, and Vendor Showcase

| | Mental Health Track | Evidence, Litigation & AI Track | Financial Track |
|---------|---|--|--|
| 9:00am | Mental Health Hearings: A Tool Kit for Judges and Lawyers—Part 2 | The Rise of Deepfakes: AI-Generated Evidence | Divorce and Finances: Understanding the Basics |
| 10:00am | Trauma-Informed Courtrooms: How Judges and Lawyers Can Positively Impact Behavior | Telling Your Best Story in Motions and Trials: Story-Structure Tips from Award-Winning Authors | Determining Income for Support: Navigating Complex Financial Realities |
| 10:50am | Networking Break | | |
| 11:05am | Safeguarding Yourself and Your Staff from Workplace Violence | How to Introduce Evidence in Hearings and Trial | From Risk to Revenue: Fixing IOLTA Mistakes and Billing Gaps in Family Law Firms |

Tracks

Plenary Sessions

8:00am/Thursday & Friday

Registration, Continental Breakfast, and Vendor Showcase

9:00am/Thursday

Welcome, Introductions, and Section Update and Award Presentation

Hear from the chair of the Family Law Section of the State Bar of Michigan.

Joshua M. Pease, State Appellate Defender Office, *Lansing*

9:25am/Thursday

Domestic Relations Caselaw and Statutory Update with Analysis

The Hon. Janice K. Cunningham returns with her expert analysis of recent court decisions and legislative enactments.

Hon. Janice K. Cunningham, 56th Circuit Court, *Charlotte*

11:15am/Thursday

The Impact of Secondary Trauma on Family Law Professionals

Family law professionals are routinely exposed to the trauma of others through their work, whether they're navigating high-conflict custody cases or reviewing distressing and graphic evidence. This repeated exposure places professionals at heightened risk for Secondary Traumatic Stress (STS), a condition that can mirror post-traumatic stress disorder and include symptoms such as sleep disturbance, impaired concentration, and emotional numbing. This plenary session will examine how STS affects family law professionals and how to identify its early warning signs. Take away practical, evidence-based tools to support clients effectively and protect your own well-being.

Carly Baetz, Purdue University Northwest, *Hammond, IN*

5:00pm/Thursday

Family Law Town Hall

Select faculty members lead an interactive discussion of new developments, statewide and local trends, and up-to-the-minute practice strategies in this freewheeling session.

Alicia Bianchi, Wayne County Friend of the Court, *Detroit*; Jennie Boldish Bryan, McShane & Bowie PLC, *Grand Rapids*

Family Law Foundations Track

1:30pm/Thursday

Knowing What You Don't Know: Strategic Use of Experts in Family Law

Socrates famously said, "The only true wisdom is in knowing you know nothing." Learn to identify when expert involvement can materially improve case outcomes. From

financial and business issues to parenting, mental health, and digital evidence, learn how to recognize the limits of your own knowledge and strategically deploy consulting and testifying experts. This session focuses on practical decision-making: when an expert is necessary, when it is overkill, and how to use experts efficiently and persuasively.

Ruth Goldner, Goldner Deeg PLLC, *Royal Oak*

2:25pm/Thursday

I Want My Day in Court: Helping Clients Overcome Resistance to Settlement

Examine common settlement impediments including "day in court" fantasies, anger and perceived injustice, unrealistic expectations, misinformation from social media, decision fatigue, fear of regret, and misunderstanding of the court's authority. Learn client-management strategies for each phase of a case: setting settlement expectations early, using litigation-risk narratives, handling last-minute "blow-ups," and effective use of experts and third-parties all while mitigating client dissatisfaction.

Karen S. Sendelbach, Nichols Sacks Slank Sendelbach Buiteweg & Solomon PC, *Ann Arbor*

3:20pm/Thursday

The Referee Hearing: What You Need to Know

Put your best foot forward to prepare your case, present your case, and handle any post-hearing procedures for domestic relations matters that have been scheduled for an evidentiary hearing before the referee. Whether you're a new lawyer—or an experienced practitioner who needs to brush up on referee hearing procedures and protocols—this session will help sharpen the tools in your practice belt and avoid the "pitfalls" that may appear as you navigate hearings before the referee.

Christopher J. Harrington, Oakland County Friend of the Court, *Pontiac*; Erin Morrae Magley, Ottawa County Referee, *Grand Haven*; Janet A. Mendez, Ingham County Friend of the Court, *Lansing*

4:10pm/Thursday

Developing Expertise: Top 10 Must-Know Subjects for Every Family Law Lawyer and Judge

Family law lawyers and judges must have vast knowledge about a wide range of topics: mental health diagnosis; reading and understanding tax returns; sources of income; bankruptcy; business valuations; real estate valuations; pensions; and more. From the perspective of both a seasoned and younger lawyer, learn how to develop the massive expertise a family law practitioner must acquire. Discover a training plan to gain that knowledge and get examples of why it is important to develop that expertise before making mistakes.

Jennie Boldish Bryan, McShane & Bowie PLC, *Grand Rapids*; Victoria Celmer, McShane & Bowie PLC, *Grand Rapids*

SAVE MORE WITH ICLE

We've teamed with CNA and Highstreet ProLaw Group to help you save on malpractice insurance. Learn more: www.icle.org/cna. (2% major event savings is limited to one event per year.)

Intermediate/Advanced Track

1:30pm/Thursday

New Pathways to Parentage

Learn how the newly enacted Assisted Reproduction and Surrogacy Parentage Act and the latest changes to the Paternity Act and the Revocation of Parentage Act have created new pathways to parentage for your clients. Don't get caught facing a dismissal! Examine the new causes of action available to intended parents, donors, and surrogates, as well as changes to the standard paternity petitions you are already using.

J. Matthew Catchick Jr., Catchick Law PC, *Bloomfield Hills*; Lisa J. Schmidt, Speaker Law Firm, *Lansing*

2:25pm/Thursday

Shades of Gray: Considerations in Gray Divorce at Every Stage

Gray divorce is increasing and issues facing these clients evolve significantly as clients age. When parties divorce early in retirement, disputes can include whether a party can or should continue to work and how to allocate limited assets, recognizing there is little opportunity to rebuild wealth. In later-stage gray divorce, the focus shifts to diminished decisional ability, health care and long-term care planning, and efforts by parties or adult children to preserve assets, secure benefit eligibility, or protect anticipated inheritances.

Laura E. Eisenberg, Eisenberg & Spilman PLLC, *Birmingham*; Mekel Sebestyen Miller, Eisenberg & Spilman PLLC, *Birmingham*

3:20pm/Thursday

Hands Off My Assets! Separate Property Invasion Showdown

Using a series of realistic scenarios, take a deep dive into contentious separate property issues. Weigh in on how the court should rule in each scenario and then see how judges actually ruled. Understand recent caselaw developments and gain strategies for protecting and seeking invasion of separate property.

Hon. Jennifer L. Johnsen, 17th Circuit Court, *Grand Rapids*; Shalini Nangia, Varnum LLP, *Ann Arbor*

4:10pm/Thursday

Intersection of Family Law and Juvenile Court

Almost inevitably, a family law practitioner will have a custody case that intersects with juvenile court, either through a child protective proceeding or a juvenile delinquency. The unique and complicated juvenile court system in Michigan can be daunting and unapproachable for those who have never encountered it. This session sheds light on how child custody matters intersect with juvenile court so that practitioners know what to expect when those cases arise.

Joshua M. Pease, State Appellate Defender Office, *Lansing*; Hon. Amanda G. Pollard, Eaton County Probate Court, *Charlotte*

Bench and Bar Track

1:30pm/Thursday

How to Assess Your Case for Trial

Family law trials are won (or lost) long before the first witness is sworn—through disciplined case assessment, realistic time estimates, and clear-eyed cost-benefit counseling. Get a practical framework to evaluate a case for trial: assessing evidentiary strengths and vulnerabilities and creating budgets clients can understand. Learn to triage facts versus noise, evaluate credibility, anticipate the other side's theory, and decide when settlement beats a "good" trial position.

David S. Mendelson, The Mendelson Law Firm, *Birmingham*

Moderators



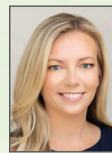
Financial Track

Michelle F. Gallagher
Adamy Valuation, *Lansing*



Family Law Foundations Track

Ruth Goldner
Goldner Deeg PLLC, *Royal Oak*



Mental Health Track

Ryan M. Kelly
Kelly & Kelly PC, *Northville*



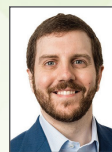
Evidence, Litigation & AI Track

John K. Kline
Kline Legal Group PLC, *Ann Arbor*



Bench and Bar Track

Hon. Paul F. Kraus
20th Circuit Court, *Grand Haven*



Plenary Session

Joshua M. Pease
State Appellate Defender Office, *Lansing*



Intermediate/Advanced Track

Lisa J. Schmidt
Speaker Law Firm, *Lansing*

Tracks

2:25pm/Thursday

On the Record: Setting the Stage for Appeal

Explore common bases for reversal in family law cases and how to make a better record on those issues to improve your chances on appeal or to avoid an appeal altogether. Nervous about how to make the record after-the-fact? We will discuss how to settle the record for appeal, how to avoid the need to do so, and whether a remand can fix the problem.

Hon. Kathleen A. Feeney, Michigan Court of Appeals, *Grand Rapids*; Liisa R. Speaker, Speaker Law Firm PLLC, *Lansing*; Hon. Christopher P. Yates, Retired, Ven Johnson Law PLC, *Kalamazoo*

3:20pm/Thursday

Proving Proper Cause/Change of Circumstances

Learn to draft motions that track the best-interest factor and show proper cause or changed circumstances in your next custody or parenting time modification case. Identify the difference between a “normal life change” and a “material change that will affect the life of a child.” Understand what an “offer of proof” is under MCR 3.210(C)(8) on the custody threshold issue. Explore how the Bowling decision impacts referees making Vodvarka custody threshold decisions and whether it also applies to the Shade parenting time threshold.

Alicia Bianchi, Wayne County Friend of the Court, *Detroit*; Shon A. Cook, Tabono Law, *Muskegon*; Hon. Jenny L. McNeill, 14th Circuit Court, *Muskegon*

4:10pm/Thursday

When the Courtroom Becomes a Weapon: Recognizing and Stopping Litigation Abuse in Family Law

Litigation is meant to resolve disputes—not become one. Identify the growing problem of litigation abuse: the weaponization of motions, emergency filings, and procedural tactics to harass, exhaust, and coerce. Walk away with practical tools to identify the patterns, protect your clients, and push back—effectively.

Shelley A. Kester, Wilson Kester PLLC, *Traverse City*; Hon. Jon A. Van Allsburg, 20th Circuit Court, *Grand Haven*

Mental Health Track

9:00am/Friday

Mental Health Hearings: A Tool Kit for Judges and Lawyers—Part 2

In this follow-up to last year’s session, we continue the discussion on conducting hearings and ordering treatment when navigating mental health issues. Understand the kinds of behaviors that can arise during each phase of a pending case and get the resources to assist at each stage, from discovery to examination of witnesses and more. Whether substance abuse, parental alienation, domestic violence or other behavior, explore specific guidance on what testing and therapies are appropriate to order and when. Demystify

mental health labels and take away a common language to assist in getting clients the services they need.

Sean A. Blume, Blume Law Group PLLC, *Sterling Heights*; Hon. Susan A. Dabaja, 3rd Circuit Court, *Detroit*; Richard W. Wooten, Matrix Psychological Consulting LLC, *Southfield*

10:00am/Friday

Trauma-Informed Courtrooms: How Judges and Lawyers Can Positively Impact Behavior

Explore how judges and lawyers can make changes in how we interact within the legal system with a trauma-informed framework that empowers better litigant engagement all while improving procedural fairness. Learn to recognize trauma’s impact on behavior, how to reduce re-traumatization by creating calmer and safer/more predictable environments and how being trauma-informed drives changes in interactions as well as changes to the spaces we do our work.

Hon. Carol Montavon Bealor, 43rd Circuit Court, *Cassopolis*; Steven D. Capps, State Court Administrative Office Friend of the Court Bureau, *Lansing*

11:05am/Friday

Safeguarding Yourself and Your Staff from Workplace Violence

Threats and harassment toward family law practitioners are well-documented and the practice area is generally considered higher risk than other areas of law. Explore how and when these behaviors are likely to occur and how to recognize the potential signs. Take away best practices for creating safety plans, training your staff, and ethically withdrawing from representation when necessary.

Ryan M. Kelly, Kelly & Kelly PC, *Northville*

Evidence, Litigation & AI Track

9:00am/Friday

The Rise of Deepfakes: AI-Generated Evidence

As AI has advanced, the integrity of evidence and use of deepfakes will put our legal system to the most extreme of tests. Courts have already seen cases of AI-generated evidence, ranging from fake documents and photographs to audio and video files. New rules on evidence authentication, methods of review, and penalties for submission of detected fakes is needed. Hear from one of the foremost experts in the field of AI, Dr. Hafiz Malik. Understand how to avoid and detect possible fake evidence, including methods used in media and government in detection, what roles experts will play, and what states and courts are doing to combat the generation of fake evidence.

Randall J. Chioini, Chioini Group PLLC, *Mount Clemens*; Prof. Hafiz Malik, University of Michigan - Dearborn, *Dearborn*

10:00am/Friday

Telling Your Best Story in Motions and Trials: Story-Structure Tips from Award-Winning Authors

Learn to tell a compelling story in your motions and throughout your trials using proven story-structure techniques. Use the same powerful principles that Pulitzer-, Oscar- and National Book Award-winning storytellers use to connect, touch, and change our hearts and minds. Get the fundamentals that will carry you from motion practice through closing argument, including: the protagonist-complication-resolution structure, clear narrative arcs, strong theme statements, drafting processes, and crafting stories that matter.

David C. Sarnacki, The Sarnacki Law Firm PLC, *Grand Rapids*

11:05am/Friday

How to Introduce Evidence in Hearings and Trial

Walk through the mechanics of offering evidence at hearings and trials *successfully*—from asking the right questions to laying proper foundations, authenticating your exhibits, confronting common objections, and publishing admitted exhibits. By adopting a clear, repeatable workflow, see how to introduce documentary, physical, and digital exhibits, with attention to common courtroom trouble spots like hearsay, original writings, and more.

John K. Kline, Kline Legal Group PLC, *Ann Arbor*; Hon. David M. Lawson, U.S. District Court for the Eastern District of Michigan, *Detroit*

Financial Track

9:00am/Friday

Divorce and Finances: Understanding the Basics

Using a mock divorce case, explore the fundamentals of business valuations, how financial experts can help you with

discovery, and best practices for integrating financial experts into your cases.

Benjamin I.S. Bershad, Bershad Valuation Consulting LLC, *West Bloomfield*; Michelle F. Gallagher, Adamy Valuation, *Lansing*; Paul A. McCarthy, Rhoades McKee PC, *Grand Rapids*

10:00am/Friday

Determining Income for Support: Navigating Complex Financial Realities

Using a mock divorce case, explore key considerations in determining income available for child and spousal support, with a focus on complex and frequently misunderstood financial issues. Presenters will address topics such as preparing a lifestyle analysis, double-dipping and partial dipping, treatment of capital gains, and the challenges associated with unrealized investment income. Gain practical insight and analytical approaches used by financial experts in support calculations.

Jason E. Bodmer, Bodmer Price, *Bloomfield Hills*; Jason W. LeRoy, Doeren Mayhew, *Troy*; Hon. Lorie N. Savin, 6th Circuit Court, *Pontiac*

11:05am/Friday

From Risk to Revenue: Fixing IOLTA Mistakes and Billing Gaps in Family Law Firms

Ensure your trust accounts are compliant while also improving the financial performance of your firm. Learn the most common IOLTA compliance pitfalls, including improper handling of retainers, commingling of funds, and the absence of proper reconciliation procedures. Explore key billing inefficiencies that impact cash flow and profitability, particularly in family law practices where retainers and ongoing client work are common. Gain a clearer understanding of how to identify risks and implement systems to improve compliance and financial outcomes.

T. Jayden Doye, Prestige Accounting & Consulting, *Atlanta, GA*

PLATINUM SPONSOR



GOLD SPONSORS



SILVER SPONSORS



25TH ANNUAL

Family Law Institute

NOVEMBER 19–20, 2026

Vibe Credit Union Showplace, Novi



THE UNIVERSITY OF MICHIGAN

**Institute of Continuing
Legal Education**

1020 Greene Street
Ann Arbor, MI 48109-1444

ADDRESS SERVICE REQUESTED

NONPROFIT ORG
U.S. POSTAGE
PAID
ANN ARBOR, MI
PERMIT NO. 106

SO MANY WAYS TO SAVE

- Judges attend for free
- Referees and Friends of the Court pay only \$145
- New lawyers attend for only \$225

See below for more.

Register today! www.icle.org/family

A. Personal Info

Name _____

MI Bar# _____

Firm _____

Address _____

City _____ State _____ Zip _____

Phone _____ Fax _____

Email _____

B. Institute Registration | Pick One

- \$495 General
- \$465 Cosponsor Section Member
- \$445 ICLE Partner
- \$225 New Lawyer (Not yet reached 4th anniversary date of MI Bar admission)
- Groups:** Every 4th Registration Is Free (all from same firm)¹
- FREE** Judges (Limit 30, 5 per court, must attend in person)²
- \$145** Referees and Friends of the Court (Limit 30, 5 per office)³

2026C13540

C. Materials Format for Institute Registrants | Pick One

- FREE** Electronic Materials
- \$45** Print Handbook⁴ and Electronic Materials

D. Can't Attend the Institute?

Non-Registrants—Purchase the Electronic Materials

- \$225** Non-ICLE Partners
- \$157.50** ICLE Partners

E. Payment Info

Institute Registration (Box B) \$ _____

**Institute Registrants: Add \$45 for
Print Handbook** (Optional, Box C) \$ _____

Institute Materials for Non-Registrants (Box D)
(Add 6% MI Sales Tax to This Line Only) \$ _____

Total Amount Due \$ _____

Make your payment online with credit card:

www.icle.org/family

Alternate payment options: If you are unable to make your credit card payment online, call ICLE to process: 877-229-4350. If you need to pay by check, mail form with payment to: PO Box 1343, Ann Arbor, MI 48106-1343

Check No. _____ Payable to: ICLE

Prices guaranteed until 11/20/26. Cannot combine discounts. ¹Please attach additional sheet listing registrants attending. All registrations must be submitted and paid for at the same time. ²Current sitting state court judges (limit 30, 5 per court) attend in person for free and must call ICLE or submit order form to register. ³Limit 30, 5 per office, and must call ICLE or submit order form to register. ⁴Limit one print handbook purchase per registrant. Print handbooks are nonrefundable after the event cancellation date. **Complete Seminar Policies:** www.icle.org/info/seminarpolicies. **Cancellation Policy:** For a full refund, notify ICLE by 11/05/26. Registrants who cancel after that date will be charged a \$60 cancellation fee. No refunds will be issued after 11/12/26. **Walk-in Registrations:** Permitted on a space-available basis or if registrants fail to claim their seat in the first 15 minutes of the seminar. **Persons with Disabilities or Dietary Restrictions:** For special arrangements please contact ICLE no later than seven days before the seminar.

Accommodations: A discounted block of rooms has been reserved at The Hyatt Place in Novi under group code G-FL26. Visit www.icle.org/family/hotel or call 800-233-1234 to reserve a room. Reservations must be made by 10/18/26. Registrants are responsible for their own hotel expenses.